

Human GFR alpha 1 Protein

Cat. No. GFR-HM11A

Description

Source	Recombinant Human GFR alpha 1 Protein is expressed from HEK293 with His tag at the C-Terminus. It contains Asp25-Ser424.
Accession	NP_665736.1
Molecular Weight	The protein has a predicted MW of 45.8 kDa. Due to glycosylation, the protein migrates to 50-70 kDa based on Tris-Bis PAGE result.
Endotoxin	Less than 1EU per µg by the LAL method.
Purity	> 95% as determined by Tris-Bis PAGE > 95% as determined by HPLC

Formulation and Storage

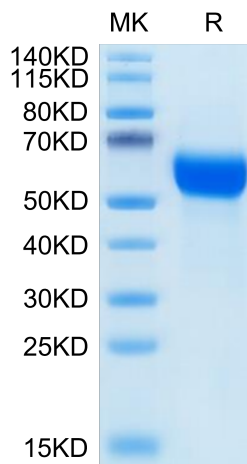
Formulation	Lyophilized from 0.22µm filtered solution in PBS (pH 7.4). Normally 8% trehalose is added as protectant before lyophilization.
Reconstitution	Centrifuge the tube before opening. Reconstituting to a concentration more than 100 µg/ml is recommended. Dissolve the lyophilized protein in distilled water.
Storage	-20 to -80°C for 12 months as supplied from date of receipt. -20 to -80°C for 3-6 months in unopened state after reconstitution. 2-8°C for 2-7 days after reconstitution. Recommend to aliquot the protein into smaller quantities for optimal storage. Please minimize freeze-thaw cycles.

Background

Neuroblastomas often undergo spontaneous differentiation and/or regression in vivo, which is at least partly regulated by the signals through neurotrophins and their receptors. Recently, glial cell line-derived neurotrophic factor (GDNF) and a second family member, neurturin (NTN), have been found to mediate their signals by binding to a heterotetrameric complex of c-Ret tyrosine kinase receptors and glycosylphosphatidylinositol-linked proteins, GFR alpha-1 (GDNFR-alpha) or GFR alpha-2 (TrnR2/GDNFR-beta/NTNR-alpha/RETL2).

Assay Data

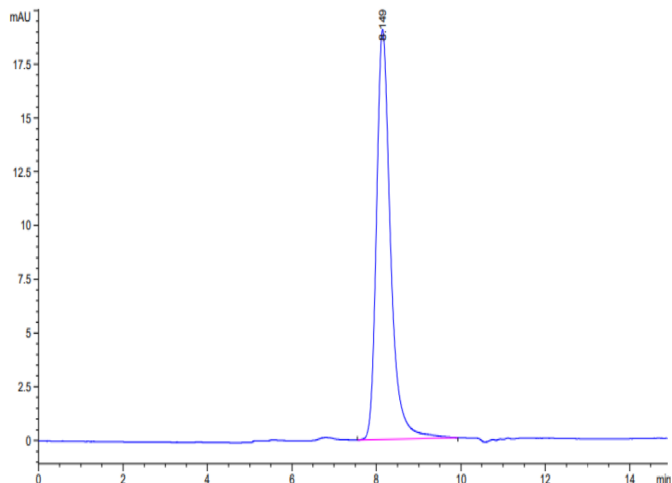
Tris-Bis PAGE



Human GFR alpha 1 on Tris-Bis PAGE under reduced condition. The purity is greater than 95%.

SEC-HPLC

Assay Data

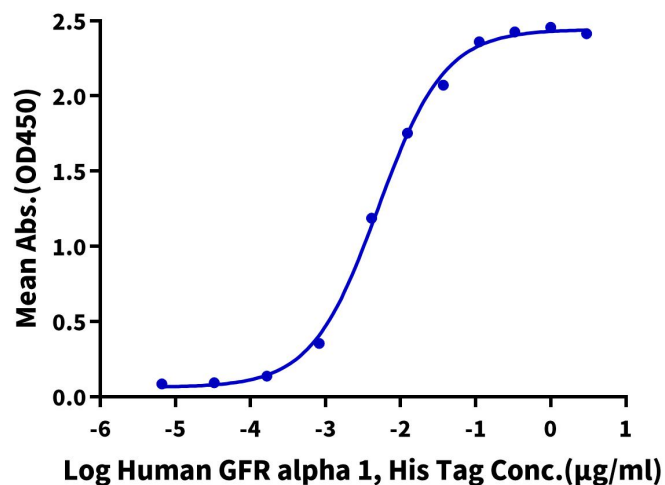


The purity of Human GFR alpha 1 is greater than 95% as determined by SEC-HPLC.

ELISA Data

Human GFR alpha 1, His Tag ELISA

0.05µg Human GDNF, No Tag Per Well



Immobilized Human GDNF, No Tag at 0.5µg/ml (100µl/well) on the plate. Dose response curve for Human GFR alpha 1, His Tag with the EC50 of 5.0ng/ml determined by ELISA.